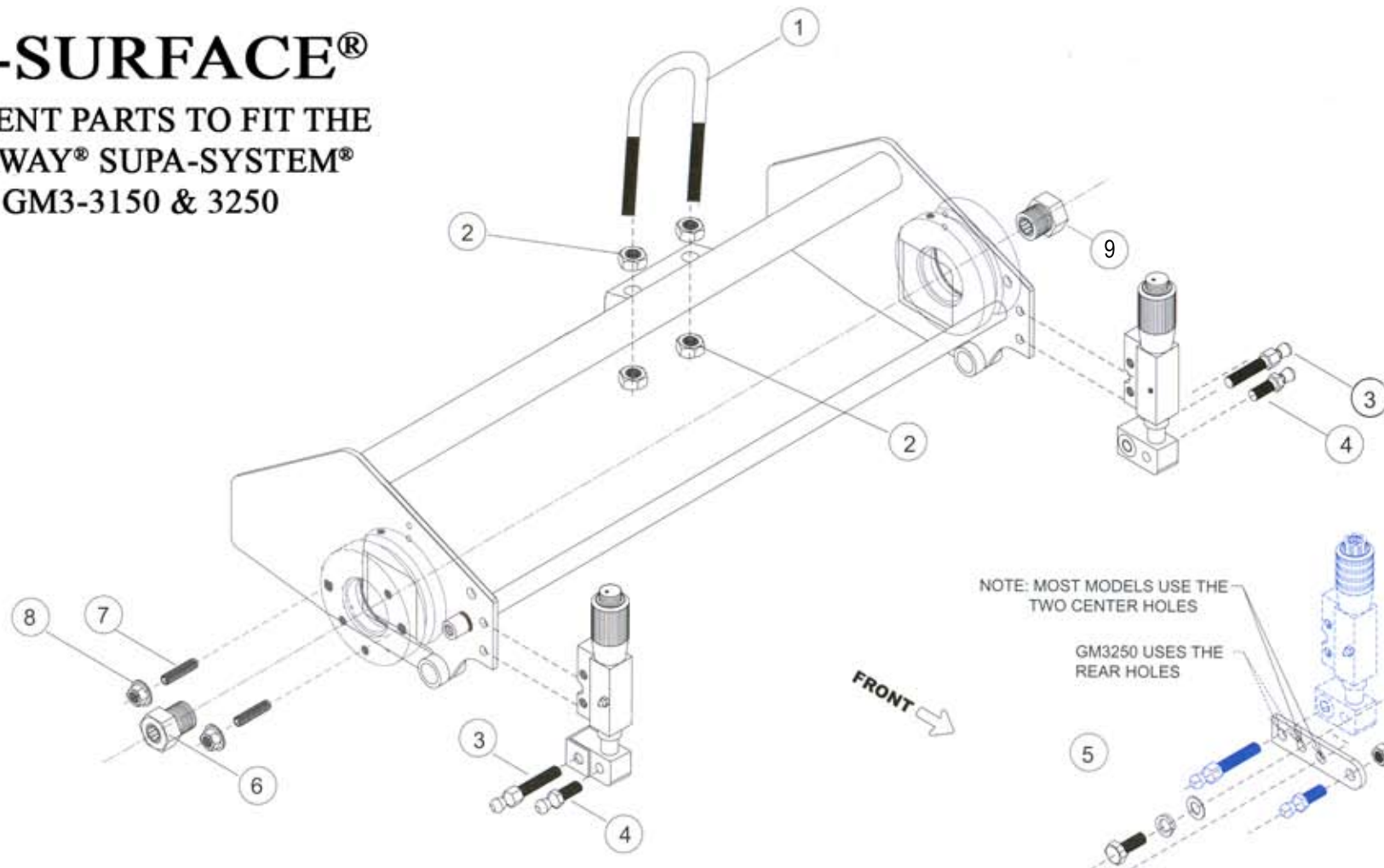


TRUE-SURFACE®

REPLACEMENT PARTS TO FIT THE
THATCH-AWAY® SUPA-SYSTEM®

TORO GM3-3150 & 3250



Quantities are for a set of 3:

No.	True-Surface® Part Number	OEM Part Number	Part Description	QTY
1	37P-7090	TAS272C	Toro Lift Hook - Straight	3
2	H-1026	TAS241C	Serrated Flange Nut	12
3	21P-GCC-205	TAS205	Ball Stud - 10mm	6
4	21P-GCC-206	TAS206C	Ball Stud - 5mm	6
5	R-TAS280	TAS280	Toro Groomer Adapt Bracket	6
6	R-TAS2-1R	TAS2-1R	Toro Right Drive Nut	3
7	H-1402	TAS242	Motor Mount Stud	6
8	H-1183	TAS243	Smooth Flange Nut	6
9	R-TAS2-1L	TAS2-1L	Toro Left Drive Nut	3

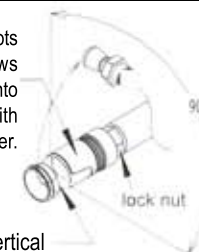
NOTE:

Some Toro Models
May require an angled
lift bracket for extra
ground clearance. We
have them available
upon your request.



Ensure the coupling slots
are vertical, this allows
the pull arm to swing into
position and secure with
the spring loaded cover.

Ball slots are vertical

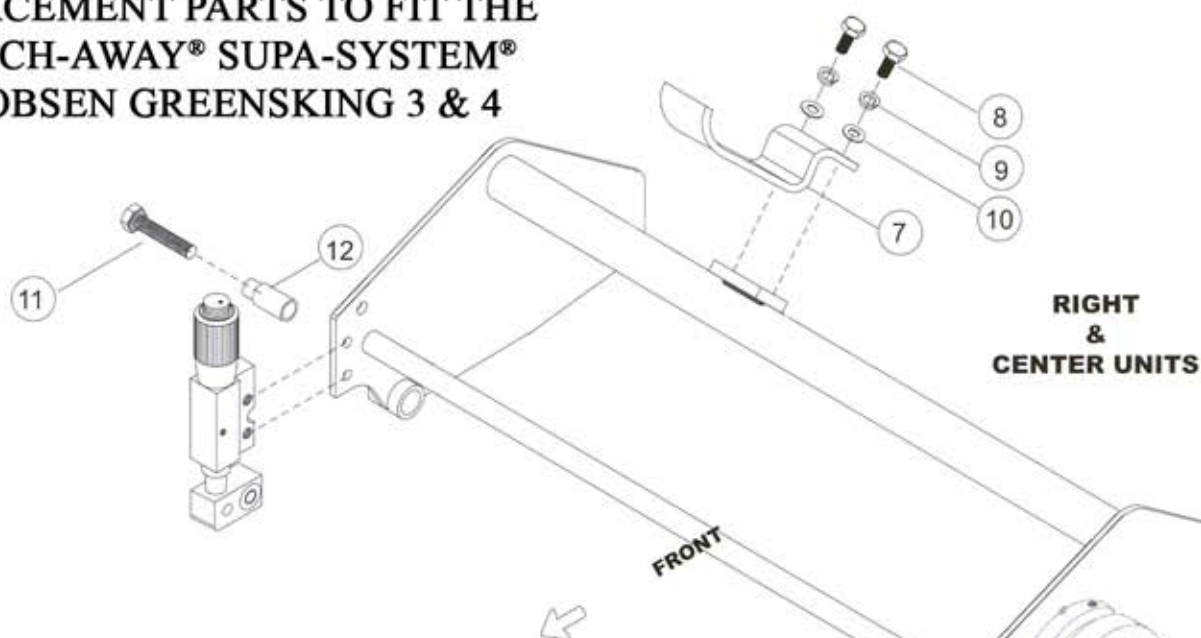


All original equipment manufacturers names and part numbers are used for identification purposes only. We are in no way implying that our products are original equipment parts.

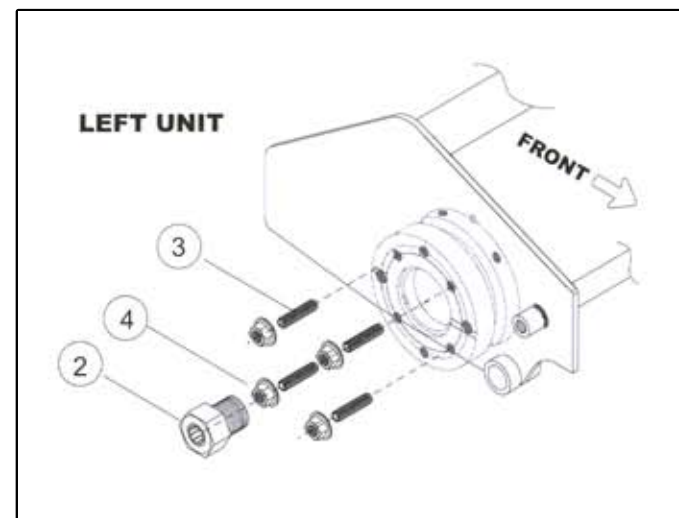
TRUE-SURFACE®
... makes true greens!™

TRUE-SURFACE®

REPLACEMENT PARTS TO FIT THE
THATCH-AWAY® SUPA-SYSTEM®
JACOBSEN GREENSKING 3 & 4



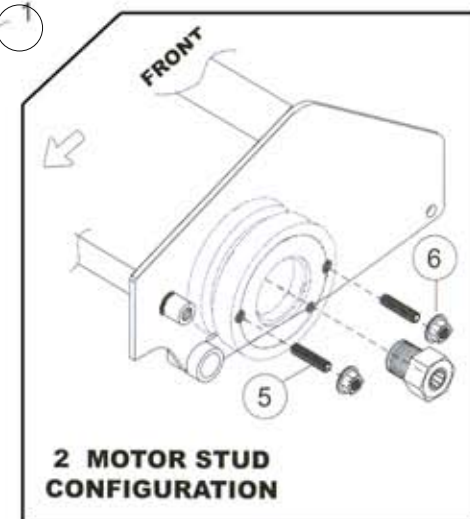
**RIGHT
&
CENTER UNITS**



Quantities are for a set of 3:

No.	True-Surface® Part Number	OEM Part Number	Part Description	QTY
1	R-TAS2-2L	TAS2-2L	Drive Nut Left Hand Thread	2
2	R-TAS2-2R	TAS2-2R	Drive Nut Right Hand Thread	1
3	H-1403	TAS255	$\frac{5}{16}$ -18 x $1\frac{1}{2}$ Socket Set Screw	12
4	H-3147	TAS256	$\frac{5}{16}$ -18 Smooth Flange Nut	12
5	H-1402	TAS242	$\frac{3}{8}$ -16 x $1\frac{3}{4}$ Socket Set Screw	6
6	H-1183	TAS243	$\frac{3}{8}$ -18 Smooth Flange Nut	6
7	R-TAS215	TAS215	Lifting Bracket	6
8	H-1022	TAS257	$\frac{5}{16}$ -24 x 1 Hex Bolt	6
9	H-1013	TAS258	$\frac{5}{16}$ Split Lock Washer	6
10	H-1019	TAS259	$\frac{5}{16}$ " Flat Washer	6
11	H-23	TAS254-C3	$\frac{3}{8}$ -16 x 2 Hex Bolt	6
12	21P-GCC-216	TAS216	Lift Bushing	6

Note: Lifting Bush fitting direction is dependant on the pull frame width.

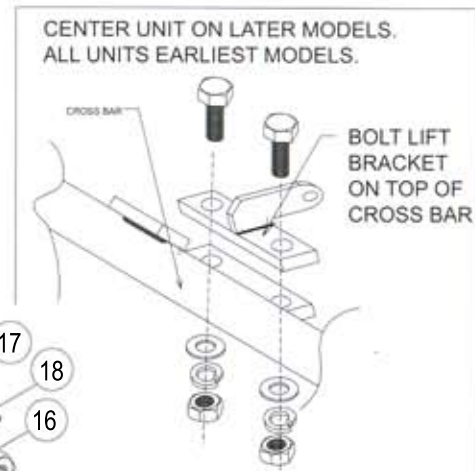
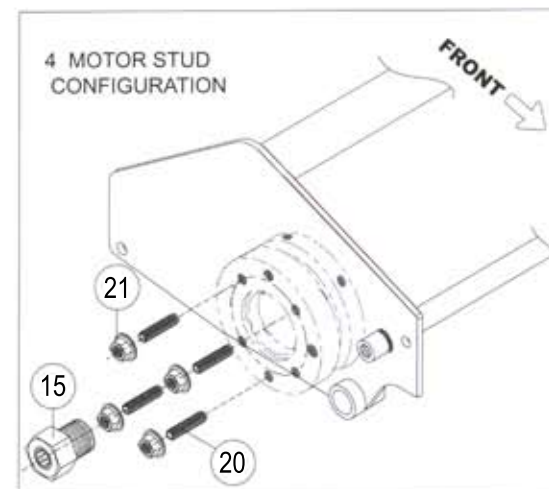
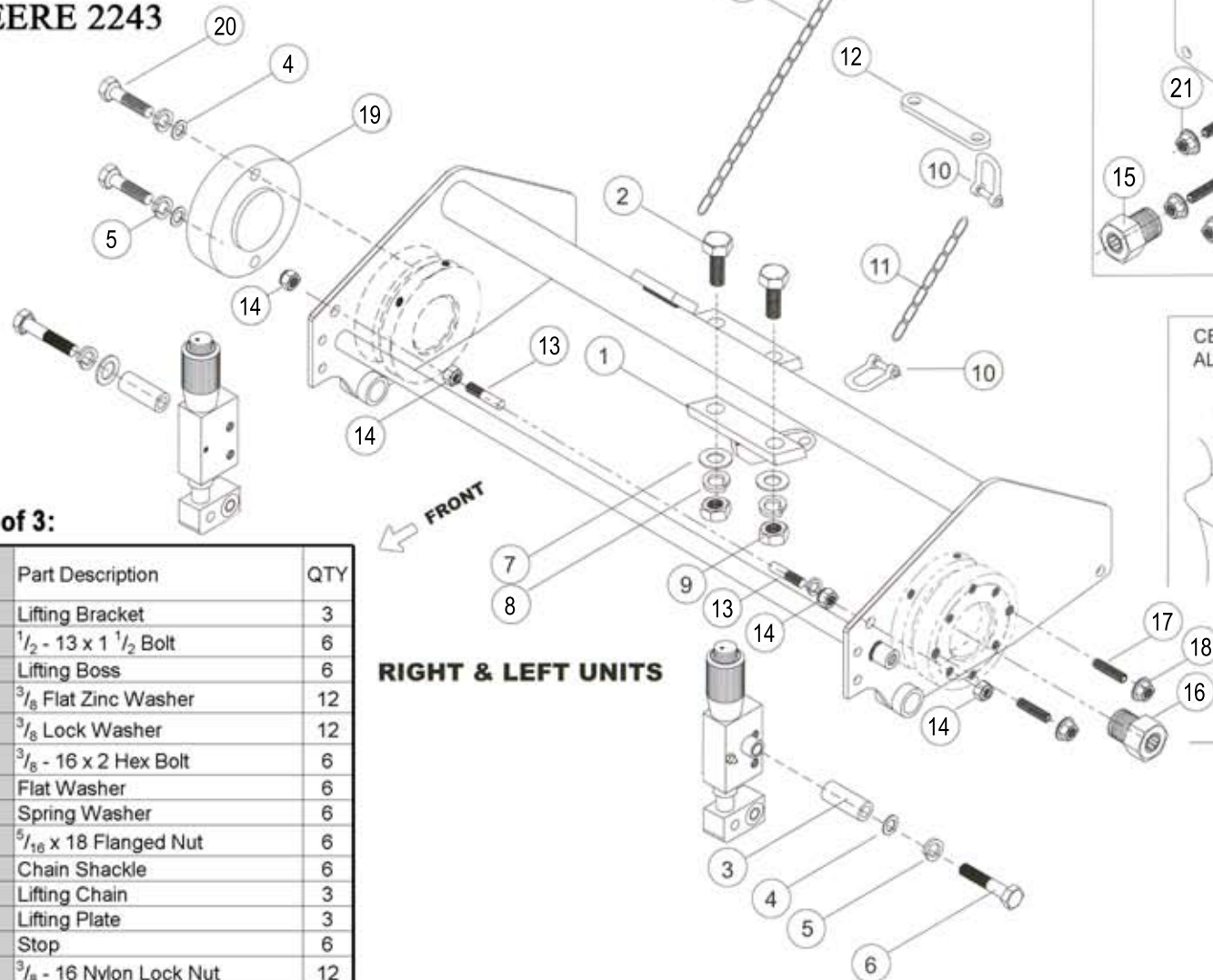


**2 MOTOR STUD
CONFIGURATION**

All original equipment manufacturers names and part numbers are used for identification purposes only. We are in no way implying that our products are original equipment parts.

TRUE-SURFACE®

REPLACEMENT PARTS TO FIT THE THATCH-AWAY® SUPA-SYSTEM® JOHN DEERE 2243



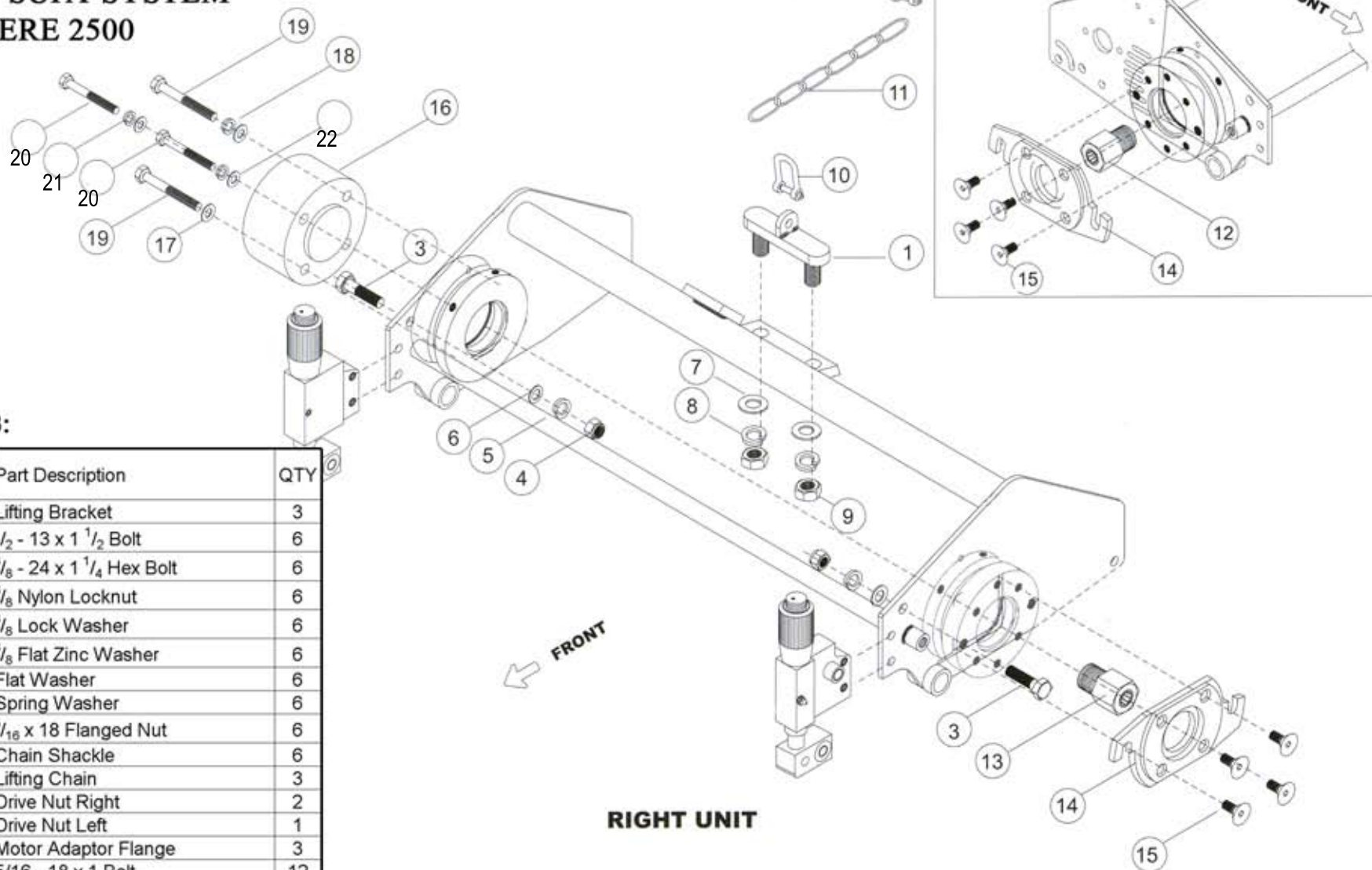
Quantities are for a set of 3:

No.	True-Surface® Part Number	OEM Part Number	Part Description	QTY
1	21P-GCC-207	TAS207	Lifting Bracket	3
2	H-1069	TAS248	1/2 - 13 x 1 1/2 Bolt	6
3	R-TAS211	TAS211	Lifting Boss	6
4	H-1006	TAS246	3/8 Flat Zinc Washer	12
5	H-1010	TAS245	3/8 Lock Washer	12
6	H-23	TAS254	3/8 - 16 x 2 Hex Bolt	6
7	H-5001	TAS251	Flat Washer	6
8	H-0014	TAS252	Spring Washer	6
9	H-1127	TAS241	5/16 x 18 Flanged Nut	6
10	R-TAS208	TAS208	Chain Shackle	6
11	21P-GCC-212	TAS212	Lifting Chain	3
12	R-TAS213	TAS213	Lifting Plate	3
13	R-TAS281	TAS281	Stop	6
14	H-1180	TAS282	3/8 - 16 Nylon Lock Nut	12
15	R-TAS2-DR	TAS2-DR	Drive Nut - Right	1
16	R-TAS2-DL	TAS2-DL	Drive Nut - Left	2
17	H-1402	TAS242	Motor Mount Stud 3/8-16 x 1 3/4	6
18	H-1183	TAS243	3/8 - 16 Smooth Flange Nut	6
19	21P-GCC-283	TAS283	John Deere Counterweight	3
20	H-284	TAS284	Counter Weight Bolt	6
21	H-1403	TAS255	5/16 - 18 x 1 1/2 Socket Screw	12
22	H-3147	TAS256	5/16 - 18 Smooth Flange Nut	12

All original equipment manufacturers names and part numbers are used for identification purposes only. We are in no way implying that our products are original equipment parts.

TRUE-SURFACE®

REPLACEMENT PARTS TO FIT THE
THATCH-AWAY® SUPA-SYSTEM®
JOHN DEERE 2500



Quantities are for a set of 3:

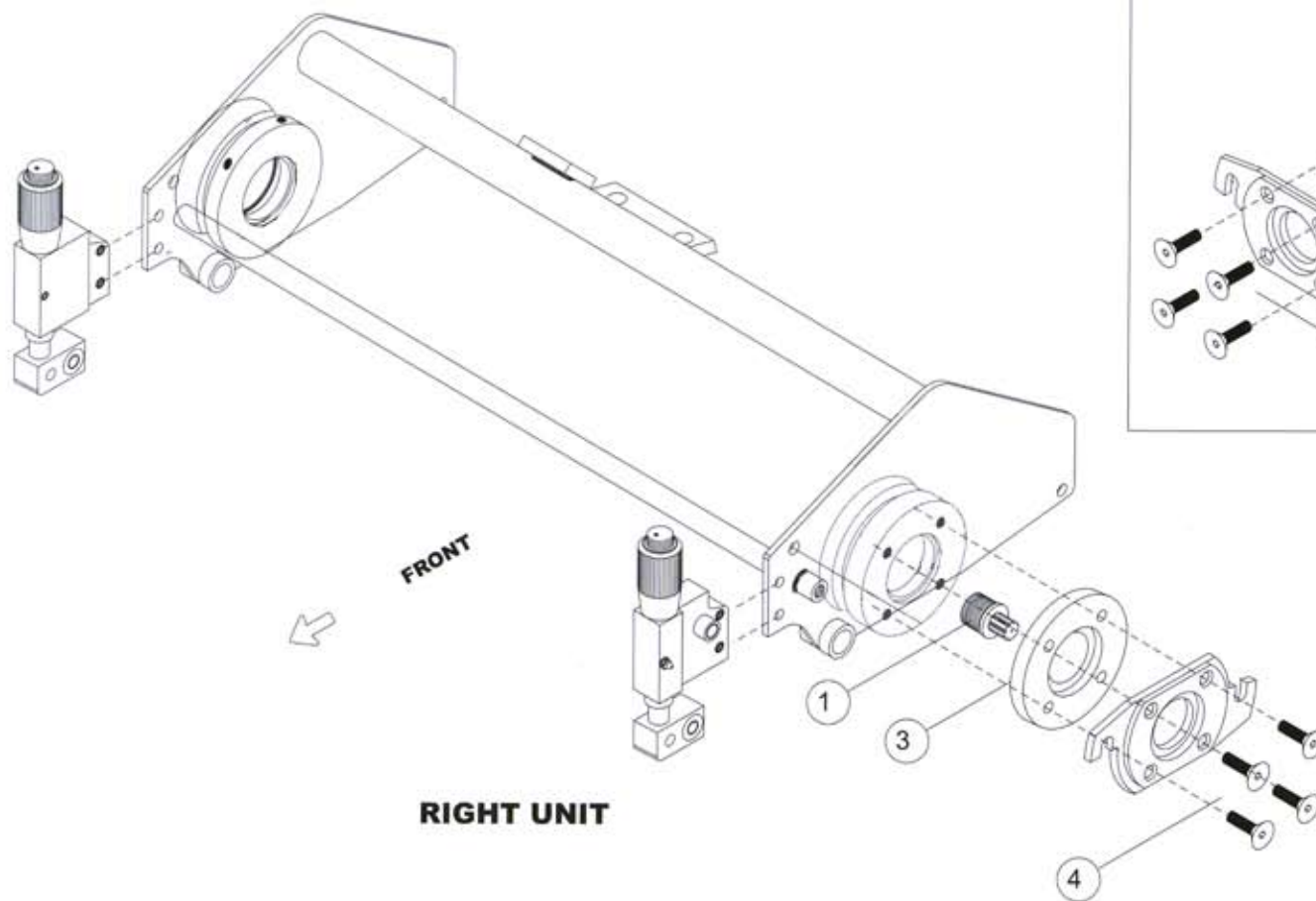
No.	True-Surface® Part Number	OEM Part Number	Part Description	QTY
1	21P-GCC-207	TAS207	Lifting Bracket	3
2	H-1069	TAS248	1/2 - 13 x 1 1/2 Bolt	6
3	H-249	TAS249	3/8 - 24 x 1 1/4 Hex Bolt	6
4	H-6102	TAS250	3/8 Nylon Locknut	6
5	H-1010	TAS245	3/8 Lock Washer	6
6	H-1006	TAS246	3/8 Flat Zinc Washer	6
7	H-5001	TAS251	Flat Washer	6
8	H-0014	TAS252	Spring Washer	6
9	H-1127	TAS241	5/16 x 18 Flanged Nut	6
10	R-TAS208	TAS208	Chain Shackle	6
11	21P-GCC-212	TAS212	Lifting Chain	3
12	R-TAS2-4R	TAS2-4R	Drive Nut Right	2
13	R-TAS2-4L	TAS2-4L	Drive Nut Left	1
14	R-TAS210	TAS210	Motor Adaptor Flange	3
15	H-1145	TAS253	5/16 - 18 x 1 Bolt	12
16	21P-GCC-285	TAS285	John Deere Counter Weight	3
17	H-1006	TAS246	3/8 Flat Zinc Washer	6
18	H-1010	TAS245	3/8 Lock Washer	6
19	H-286	TAS286	Counter Weight Bolt	6
20	H-7129	TAS288	5/16 - 18 x 3 Bolt	6
21	H-1013	TAS289	5/16 Split Lock Washer	6
22	H-1019	TAS290	5/16" Flat Washer	6

All original equipment manufacturers names and part numbers are used for identification purposes only. We are in no way implying that our products are original equipment parts.

TRUE-SURFACE®
... makes true greens!™

TRUE-SURFACE®

REPLACEMENT PARTS TO FIT THE
THATCH-AWAY® SUPA-SYSTEM®
JOHN DEERE 2500E



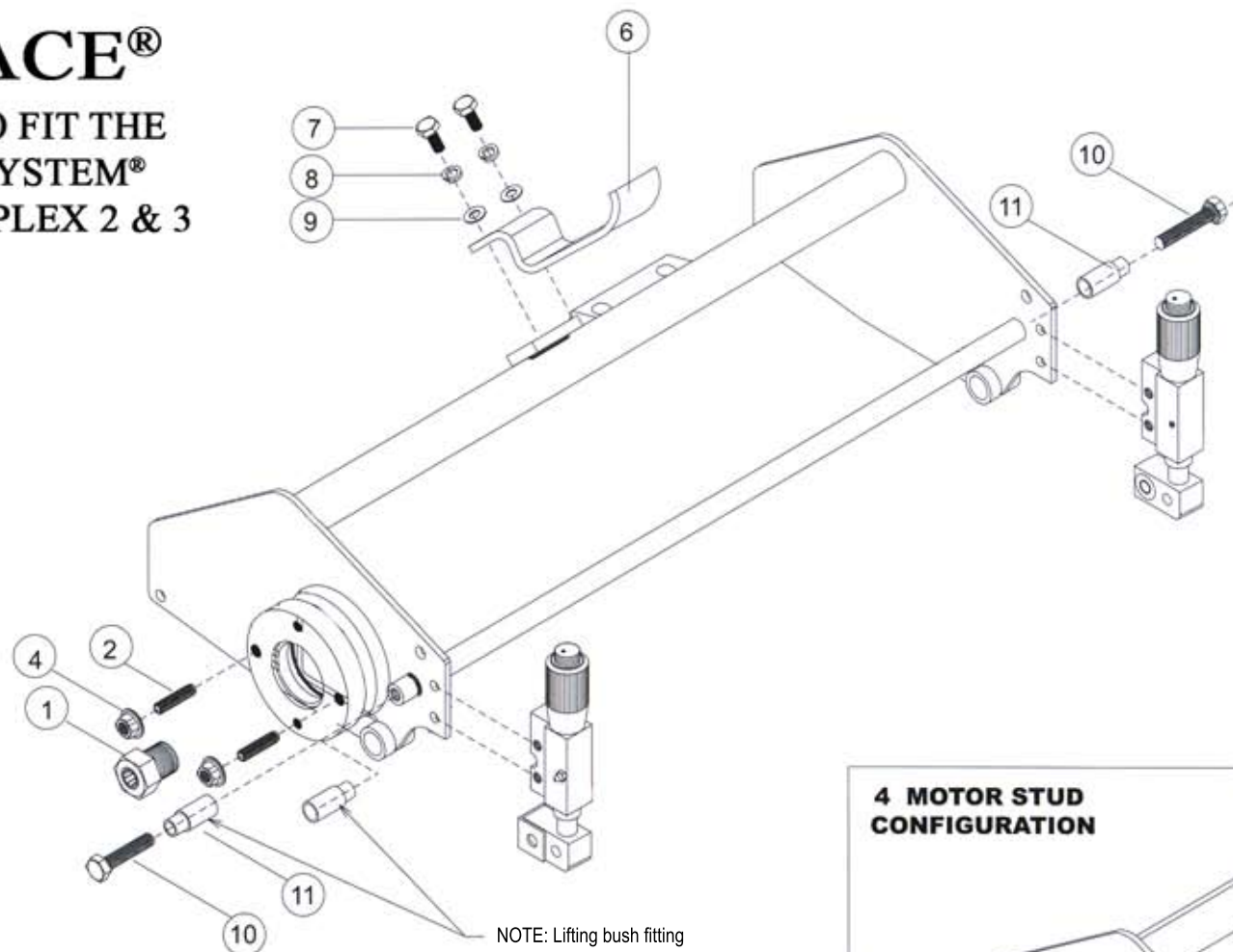
Quantities are for a set of 3:

No.	True-Surface® Part Number	OEM Part Number	Part Description	QTY
1	R- TAS2-4LE-M	TAS2-4LE-M	Drive Nut Left	3
2	R-TAS2-4RE-M	TAS2-4RE-M	Drive Nut Right	6
3	R-TAS3387	TAS3387	Spacers	3
4	H-6102	TAS250	$\frac{3}{8}$ - 24 Nylon Lock Nut	12

All original equipment manufacturers names and part numbers are used for identification purposes only. We are in no way implying that our products are original equipment parts.

TRUE-SURFACE®

REPLACEMENT PARTS TO FIT THE
THATCH-AWAY® SUPA-SYSTEM®
RANSOME & JACOBSEN GPLEX 2 & 3

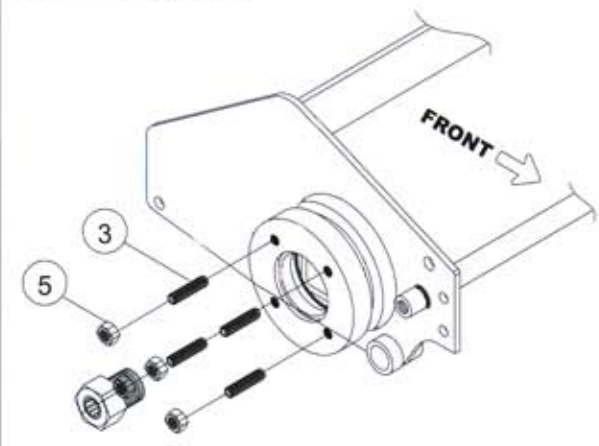


Quantities are for a set of 3:

No.	True-Surface® Part Number	OEM Part Number	Part Description	QTY
1	R-TAS2-2R	TAS2-2R	Drive Nut	3
2	30H-1402	TAS242	$\frac{3}{8}$ - 16 x 1 $\frac{3}{4}$ Socket Set Screw	6
3	30H-1403	TAS255	$\frac{5}{16}$ -18 x 1 $\frac{1}{2}$ Socket Set Screw	12
4	30H-1183	TAS243	$\frac{3}{8}$ -18 Smooth Flange Nut	6
5	30H-3147	TAS256	$\frac{5}{16}$ -18 Smooth Flange Nut	12
6	R-TAS215	TAS215	Lifting Bracket	6
7	30H-1022	TAS257	$\frac{5}{16}$ -24 x 1 Hex Bolt	6
8	30H-1013	TAS258	$\frac{5}{16}$ Split Lock Washer	6
9	30H-1019	TAS259	$\frac{5}{16}$ " Flat Washer	6
10	21H-GCC-23	TAS254-C3	$\frac{3}{8}$ -16 x 2 Hex Bolt	6
11	21P-GCC-216	TAS216	Lift Bushing	6

NOTE: Lifting bush fitting
direction depends on the
pull frame width.

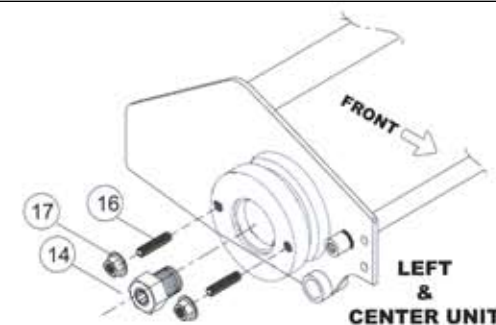
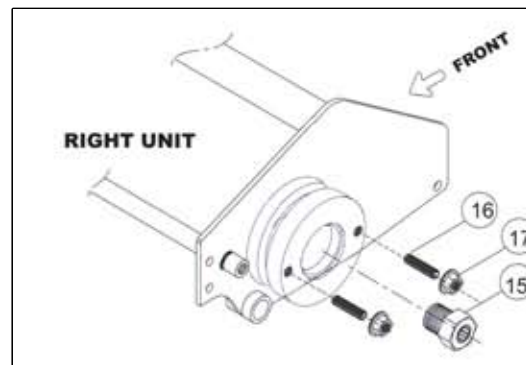
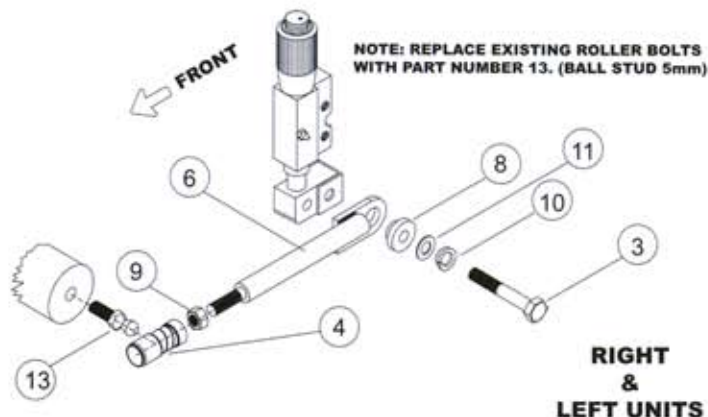
4 MOTOR STUD CONFIGURATION



All original equipment manufacturers names and part numbers
are used for identification purposes only. We are in no way
implying that our products are original equipment parts.

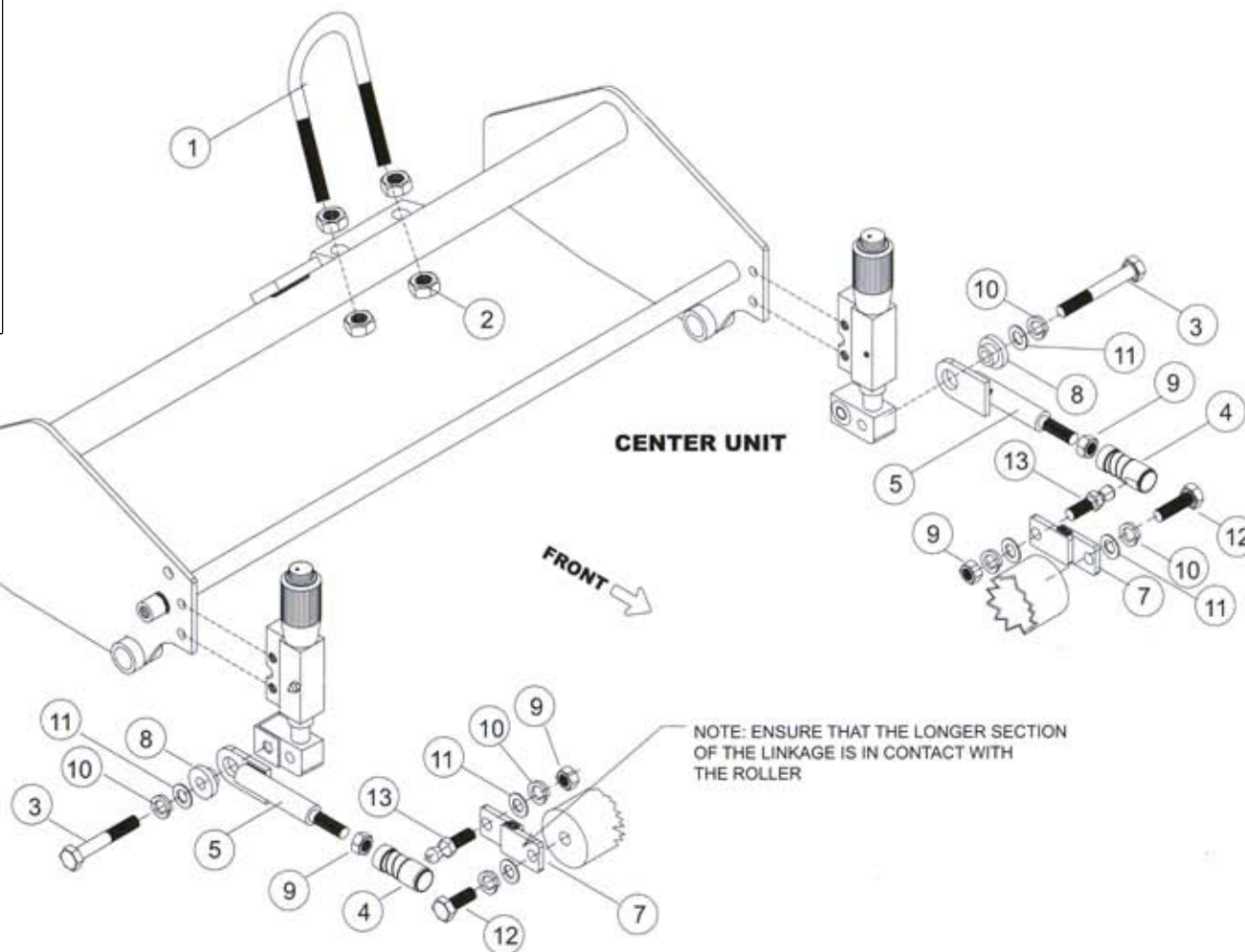
TRUE-SURFACE®

REPLACEMENT PARTS TO FIT THE THATCH-AWAY® SUPA-SYSTEM® TORO 3200



Quantities are for a set of 3:

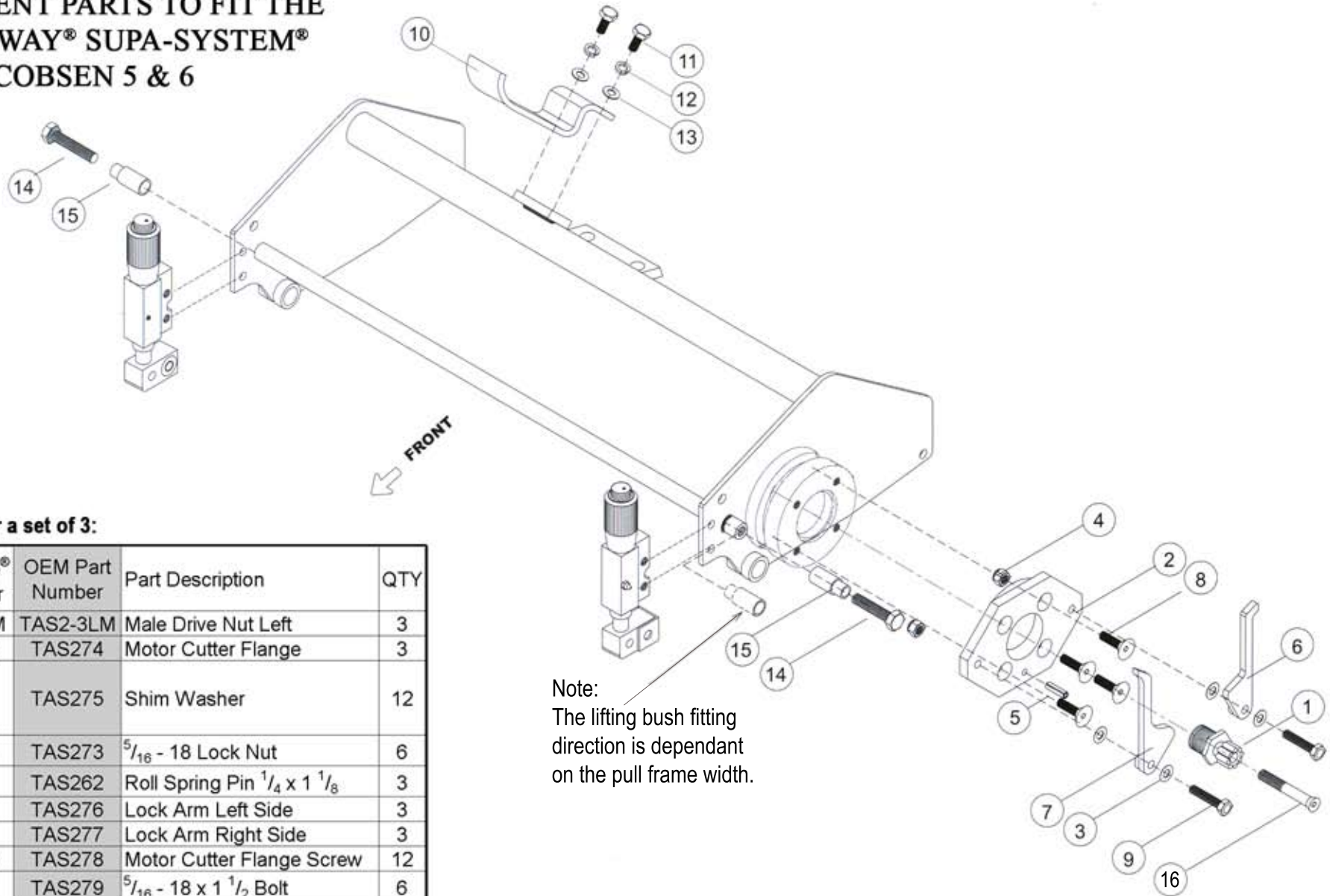
No.	True-Surface® Part Number	OEM Part Number	Part Description	QTY
1	37P-7090	TAS272C	Toro Lift Hook - Straight	3
2	H-1026	TAS241C	Serrated Flange Nut	12
3	H-23	TAS254	$\frac{3}{8}$ - 16 x 2 Hex Bolt	6
4	R-TAS236	TAS236	Coupling	6
5	R-TAS237	TAS237	Link Arm Short	2
6	R-TAS238	TAS238	Link Arm Long	4
7	R-TAS239	TAS239	Flat Link	2
8	R-TAS240	TAS240	Swivel Bushing	6
9	H-6102	TAS244	$\frac{3}{8}$ - 24 Nylon Lock Nut	6
10	H-1010	TAS245	$\frac{3}{8}$ Lock Washer	10
11	H-1006	TAS246	$\frac{3}{8}$ Flat Zinc Washer	10
12	H-2502	TAS247	$\frac{3}{8}$ - 24 x 1 $\frac{3}{4}$ Hex Bolt	2
13	21P-GCC-206	TAS206	Ball Stud - 5mm	6
14	R-TAS2-1R	TAS2-1R	Toro Right Drive Nut	2
15	R-TAS2-1L	TAS2-1L	Toro Left Drive Nut	1
16	H-1402	TAS242	Motor Mount Stud	6
17	H-1183	TAS243	Smooth Flange Nut	6



All original equipment manufacturers names and part numbers are used for identification purposes only. We are in no way implying that our products are original equipment parts.

TRUE-SURFACE®

REPLACEMENT PARTS TO FIT THE THATCH-AWAY® SUPA-SYSTEM® JACOBSEN 5 & 6



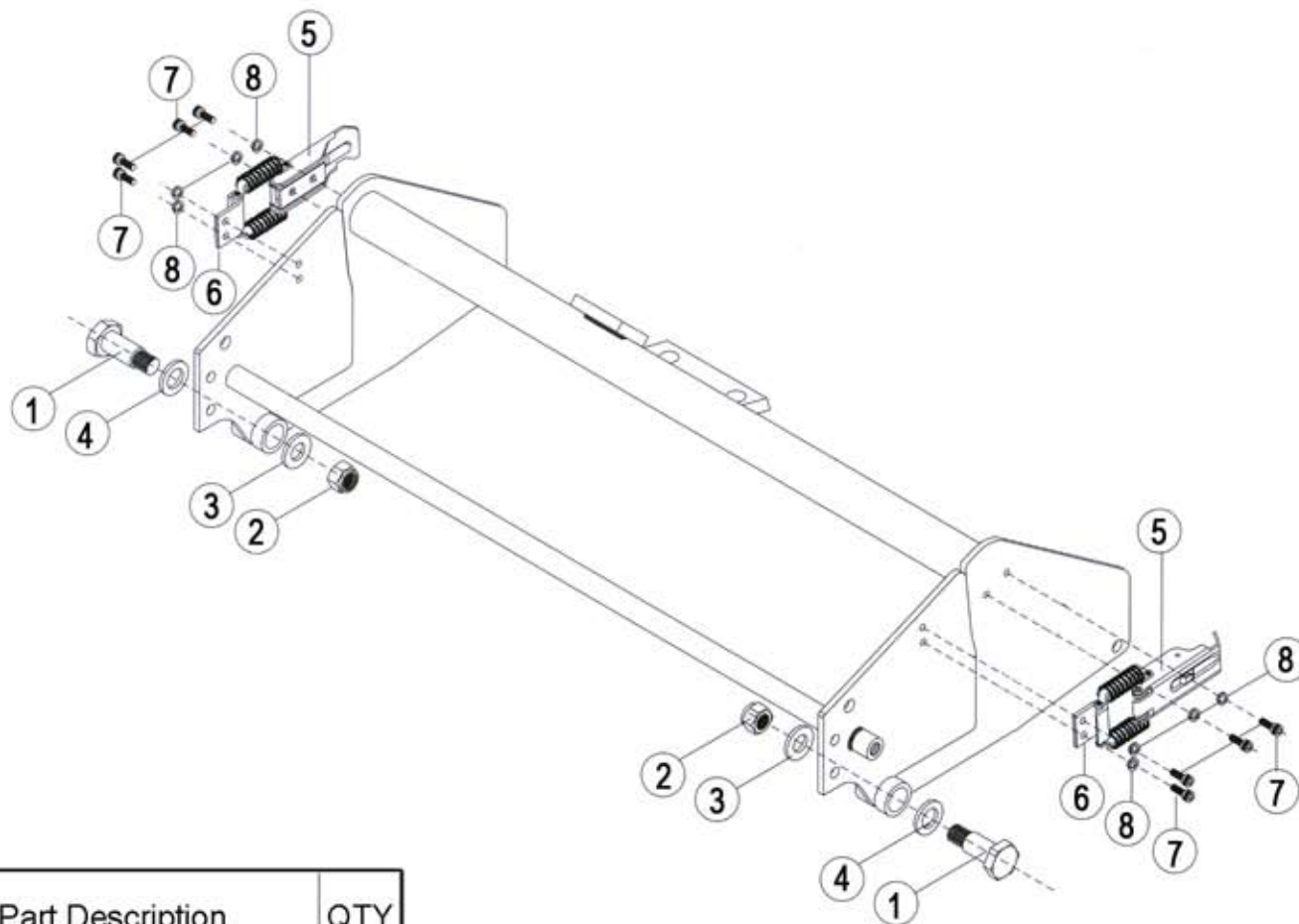
Quantities are for a set of 3:

No.	True-Surface® Part Number	OEM Part Number	Part Description	QTY
1	R-TAS2-3LM	TAS2-3LM	Male Drive Nut Left	3
2	R-TAS274	TAS274	Motor Cutter Flange	3
3	30H-JD2500E SHIM	TAS275	Shim Washer	12
4	30H-3179	TAS273	$\frac{5}{16}$ - 18 Lock Nut	6
5	37P-7178	TAS262	Roll Spring Pin $\frac{1}{4}$ x $1\frac{1}{8}$	3
6	30A-3003	TAS276	Lock Arm Left Side	3
7	30A-3002	TAS277	Lock Arm Right Side	3
8	R-TAS278	TAS278	Motor Cutter Flange Screw	12
9	30H-3107	TAS279	$\frac{5}{16}$ - 18 x $1\frac{1}{2}$ Bolt	6
10	R-TAS215	TAS215	Lifting Bracket	3
11	R-TAS257	TAS257	Bolt	6
12	30H-1019	TAS258	$\frac{5}{16}$ Flat Washer	6
13	R-TAS259	TAS259	Flat Washer	6
14	21H-GCC-23	TAS254	$\frac{3}{8}$ - 16 x 2 Hex Bolt	6
15	21P-GCC-216	TAS216	Lift Bushing	6
16	R-TAS3305	TAS3305	Drive Nut Lock Screw	3

All original equipment manufacturers names and part numbers are used for identification purposes only. We are in no way implying that our products are original equipment parts.

TRUE-SURFACE®

REPLACEMENT PARTS TO FIT THE THATCH-AWAY® SUPA-SYSTEM® FRAME ASSEMBLY



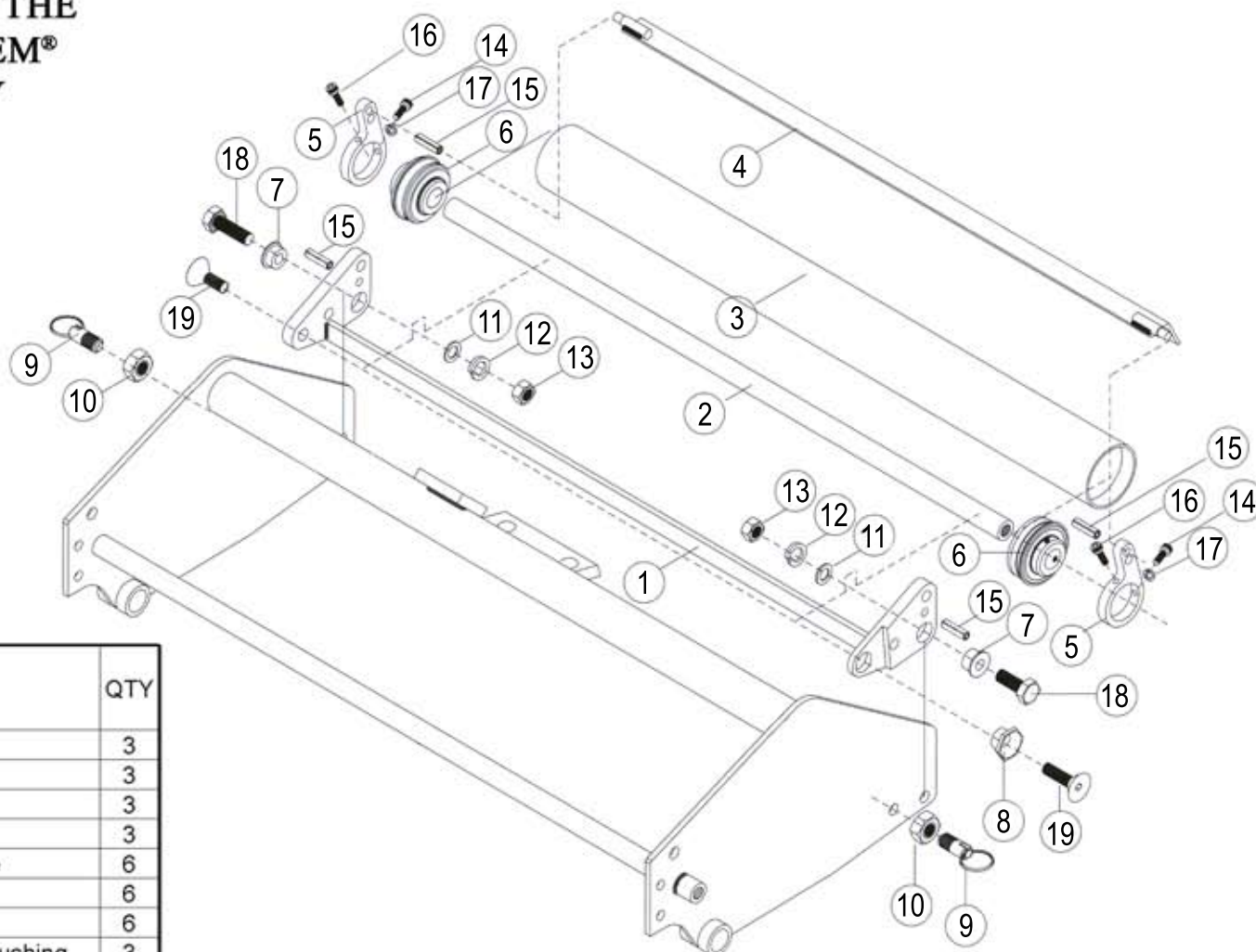
Quantities are for a set of 3:

No.	True-Surface® Part Number	OEM Part Number	Part Description	QTY
1	R-TAS3306	TAS3306	Hinge bolt	6
2	R-TAS3307	TAS3307	Nut	6
3	R-TAS3308	TAS3308	Inner Hinge Washer	6
4	R-TAS3309	TAS3309	Outer Hinge Washer	6
5	R-TAS3310	TAS3310	Latch	6
6	R-TAS3311	TAS3311	Striker Plate	6
7	R-TAS3312	TAS3312	Latch Screw	8
8	21H-GCC-17	TAS3313	Spring Washer	8

All original equipment manufacturers names and part numbers are used for identification purposes only. We are in no way implying that our products are original equipment parts.

TRUE-SURFACE®

REPLACEMENT PARTS TO FIT THE THATCH-AWAY® SUPA-SYSTEM® REAR ROLLER ASSEMBLY



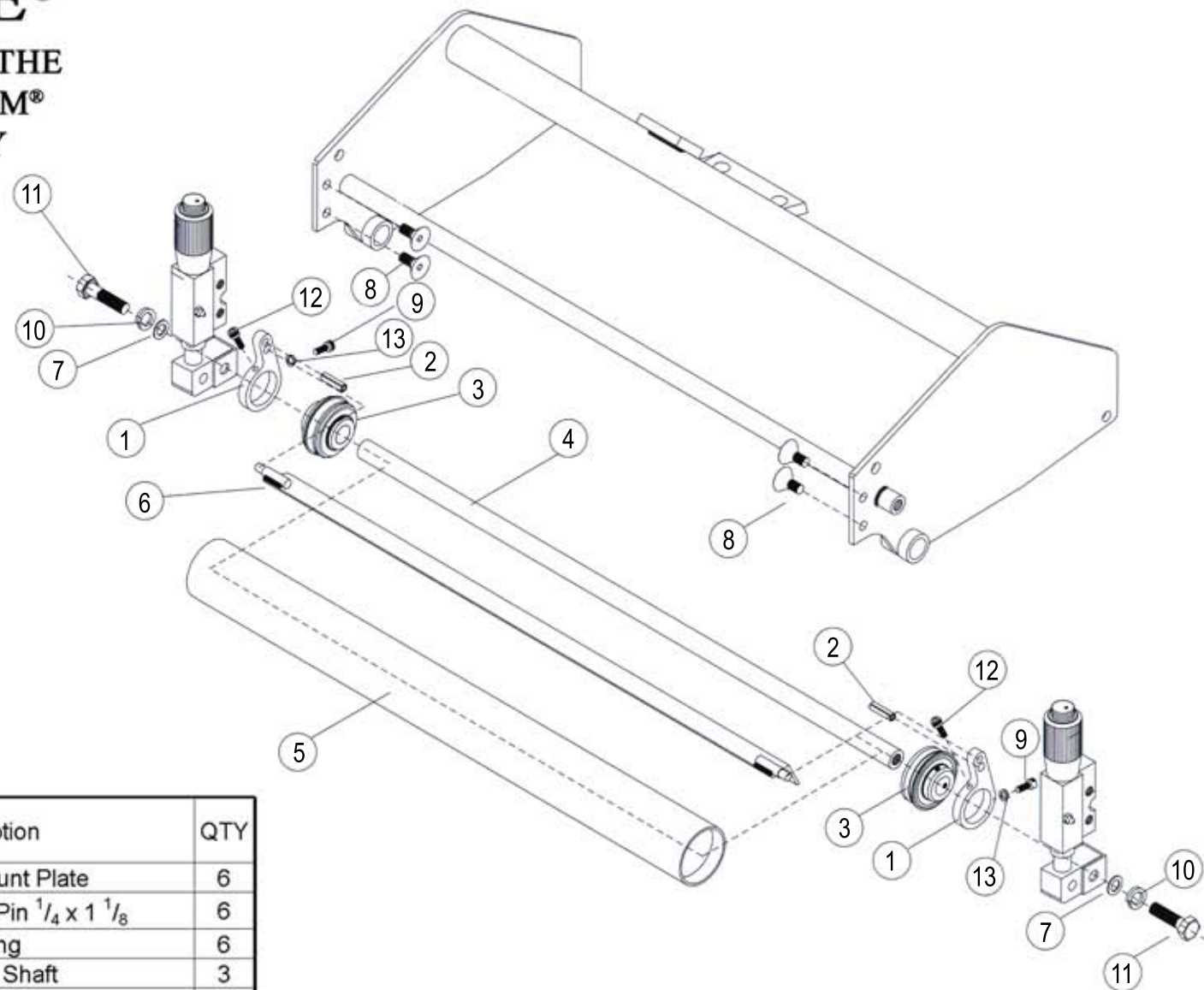
Quantities are for a set of 3:

No.	True-Surface® Part Number	OEM Part Number	Part Description	QTY
1	R-TAS3314	TAS3314	Pivoting Yoke	3
2	R-TAS227	TAS227	Rear Roller Shaft	3
3	R-TAS228	TAS228	Rear Roller Tube	3
4	R-TAS229	TAS229	Rear Scraper Angle	3
5	R-TAS220	TAS220	Scraper Mount Plate	6
6	R-TAS8007	TAS8007	Roller Bearing	6
7	R-TAS231	TAS231	Yoke Pivot Bushing	6
8	R-TAS3315	TAS3315	Eccentric Leveling Bushing	3
9	R-TAS233	TAS233	Yoke Pivot Lock Assembly	6
10	21H-GCC-27	TAS270	Hex Bolt	6
11	30H-1006	TAS246	$\frac{3}{8}$ Flat Zinc Washer	6
12	30H-1010	TAS245	$\frac{3}{8}$ Lock Washer	6
13	30H-6102	TAS244	$\frac{3}{8}$ - 24 Nylon Lock Nut	6
14	R-TAS8004	TAS8004	Socket Head Screw	6
15	37P-7178	TAS3317	Roll Spring Pin $\frac{1}{4} \times 1 \frac{1}{8}$	12
16	21H-GCC-8005	TAS266	10-32x $\frac{1}{2}$ Socket Head Screw	6
17	R-TAS8006	TAS8006	Spring Washer	6
18	30H-2502	TAS247	$\frac{3}{8}$ - 24 x 1 $\frac{3}{4}$ Hex Bolt	6
19	R-TAS3318	TAS3318	Countersunk Screw	6

All original equipment manufacturers names and part numbers are used for identification purposes only. We are in no way implying that our products are original equipment parts.

TRUE-SURFACE®

REPLACEMENT PARTS TO FIT THE THATCH-AWAY® SUPA-SYSTEM® FRONT ROLLER ASSEMBLY



Quantities are for a set of 3:

No.	True-Surface® Part Number	OEM Part Number	Part Description	QTY
1	R-TAS220	TAS220	Scraper Mount Plate	6
2	37P-7178	TAS262	Roll Spring Pin $\frac{1}{4} \times 1 \frac{1}{8}$	6
3	R-TAS8007	TAS8007	Roller Bearing	6
4	21P-GCC-221	TAS221	Front Roller Shaft	3
5	21P-GCC-222	TAS222	Front Roller Tube	3
6	R-TAS223	TAS223	Front Scraper Angle	3
7	30H-1006	TAS246	$\frac{3}{8}$ Flat Zinc Washer	2
8	21H-GCC-25	TAS263	Bracket Mount Screw	12
9	R-TAS8004	TAS8004	Socket Head Screw	6
10	30H-1010	TAS245	$\frac{3}{8}$ Lock Washer	6
11	21H-GCC-249	TAS249	$\frac{3}{8}$ - 24 x $1 \frac{1}{2}$ Hex Bolt	6
12	21H-GCC-8005	TAS8005	10-32x $\frac{1}{2}$ Socket Head Screw	6
13	R-TAS8006	TAS8006	Spring Washer	12

All original equipment manufacturers names and part numbers are used for identification purposes only. We are in no way implying that our products are original equipment parts.