

True-Surface[®] Flex Brush Attachment Instructions

Fits a Toro GM3-3150 Greens Mower

1. Unpack, locate, layout and identify all parts received.
2. Use page 3 as reference, locate item numbers 1 through 7
3. Bolt #7 will pass through the lock washer #5, and then through the large/flange side of the pivot bushing #3. These three together will then pass through attachment frame #2 and thread into the center hole in back plate of the main brush beam. Tighten each securely.
4. Each of the four shoulder bolts #6 will have a washer #4 installed directly under the head. These will then pass through the arc shaped slots of attachment frame #2 and be tightened. Frames should be pivotal after all bolts are tight.
5. After locating mounting pockets #13 & # 14, as left and right hand pairs, remove the roller axle stud from one end of the basket roller frame. Install bolt # 11, lock washer # 10 and washer # 11 through the mount pocket as shown. Thread tube connecting nut # 8 onto bolt #11 so that the open shape is facing the bracket and stop when tip of bolt is flush/fully through nut.
6. Align tube connecting nut over the end of basket frame tube and with a hammer, drive the nut into the tube by striking the head of the bolt until all slack is removed.
7. Align lower slot with roller axle and replace stud and tighten.
8. Tighten bolt # 11. (15 ft. lb. torque MAX)
9. Repeat for all ends of basket frames.
10. Threaded rod kit #17 is sent in the event that square tubing is used for the basket frame. In this case, the centering bushings are position equally from each end of the threaded rod so that they are just slightly short of the length of the tube. Mounting pockets are slid over the threaded rod, and flat washer # 9 is used under nut "D". Nuts are tightened equally.
11. Check that all retractable plungers #12 are in the retracted position.
12. Align all four attachment frame arms with all four pockets, and slide through till arms and pockets are even at the back of the pocket.
13. Release plungers to secure arms, be sure they align into locking holes.

14. Raise brush heads about 4 inches from the floor by rotating the adjuster knobs clockwise.
15. There are 2 firm, notched brush strips, and 1 soft full strip per head supplied. We have found with testing that the installation to be described has worked quite well in a multitude of conditions.
16. Visualizing the direction of travel, one firm notched strip is installed into the first, and third (middle) position on each head while the soft strip is installed into the fifth position. Notched strips are installed end for end with each other per each head so that the notches do not align from the first brush to the second.
17. Brush strip retaining pin # H-BR-071 is then installed at the end of BR-105 brush head to lock strips into place. Stop tip of retainer flush on center unit so that it does not interfere with adjacent brush.
18. Set desired height and lock by rotating locking tab down adjuster shaft and tight against cross bar.

There are several ways to achieve the desired down pressure for your True-Surface® Flex Brush. Downward force can range from no auxiliary help to locked solid with the frame. To lock the brush into position, install a cotter pin at the bottom of the adjuster shaft sleeve. Easily adjust the downward pressure by attaching the appropriate spring to the Flex Brush head – the springs are permanently mounted to the frame and easily connect and disconnect when needed. Provide light pressure by attaching the smaller spring; medium pressure by attaching the larger spring; strong pressure by attaching both the small and large springs at the same time.

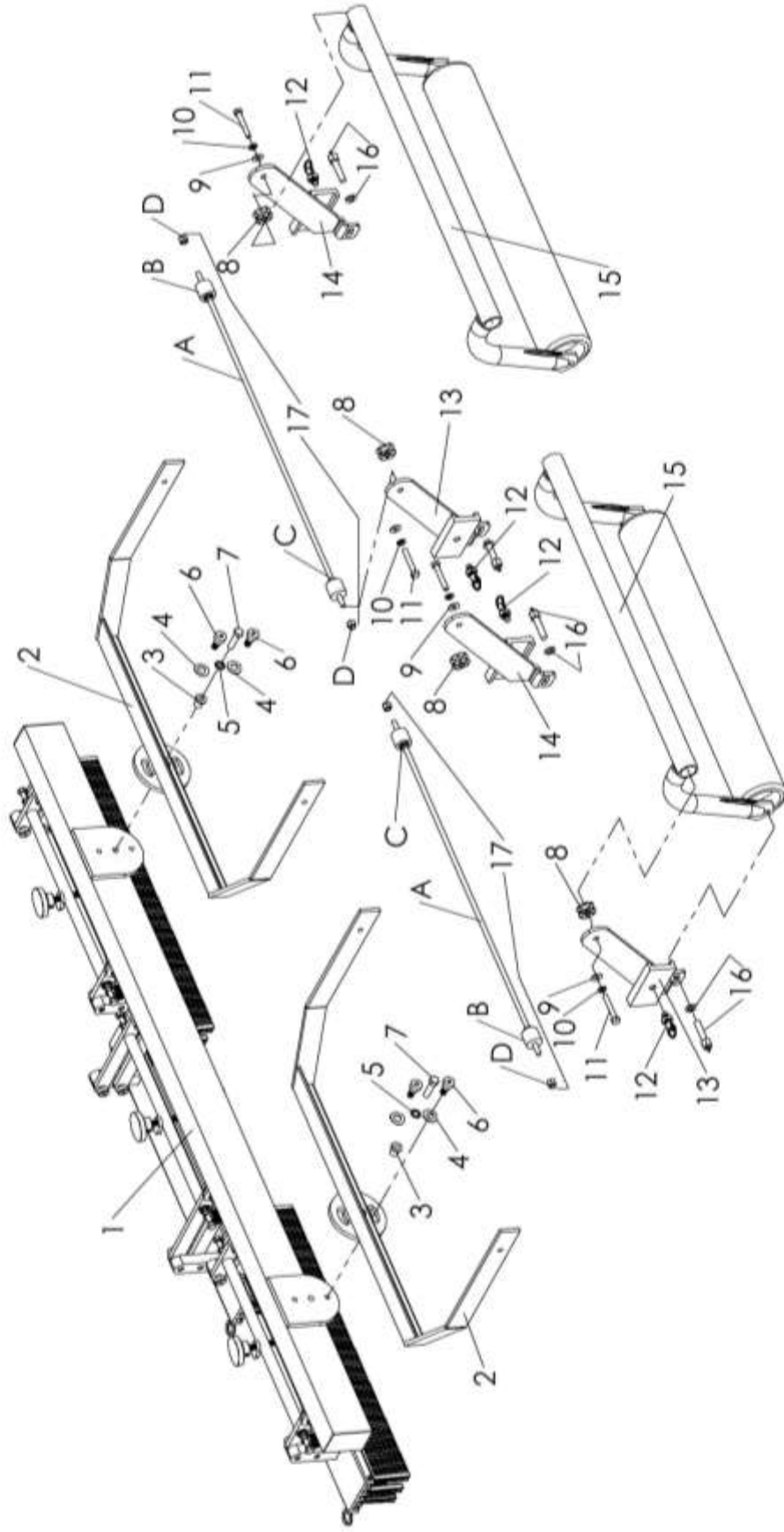
www.true-surface.com

1-800-443-850



True-Surface® Flex Brush

Parts breakdown to fit Toro GM3 - 3150



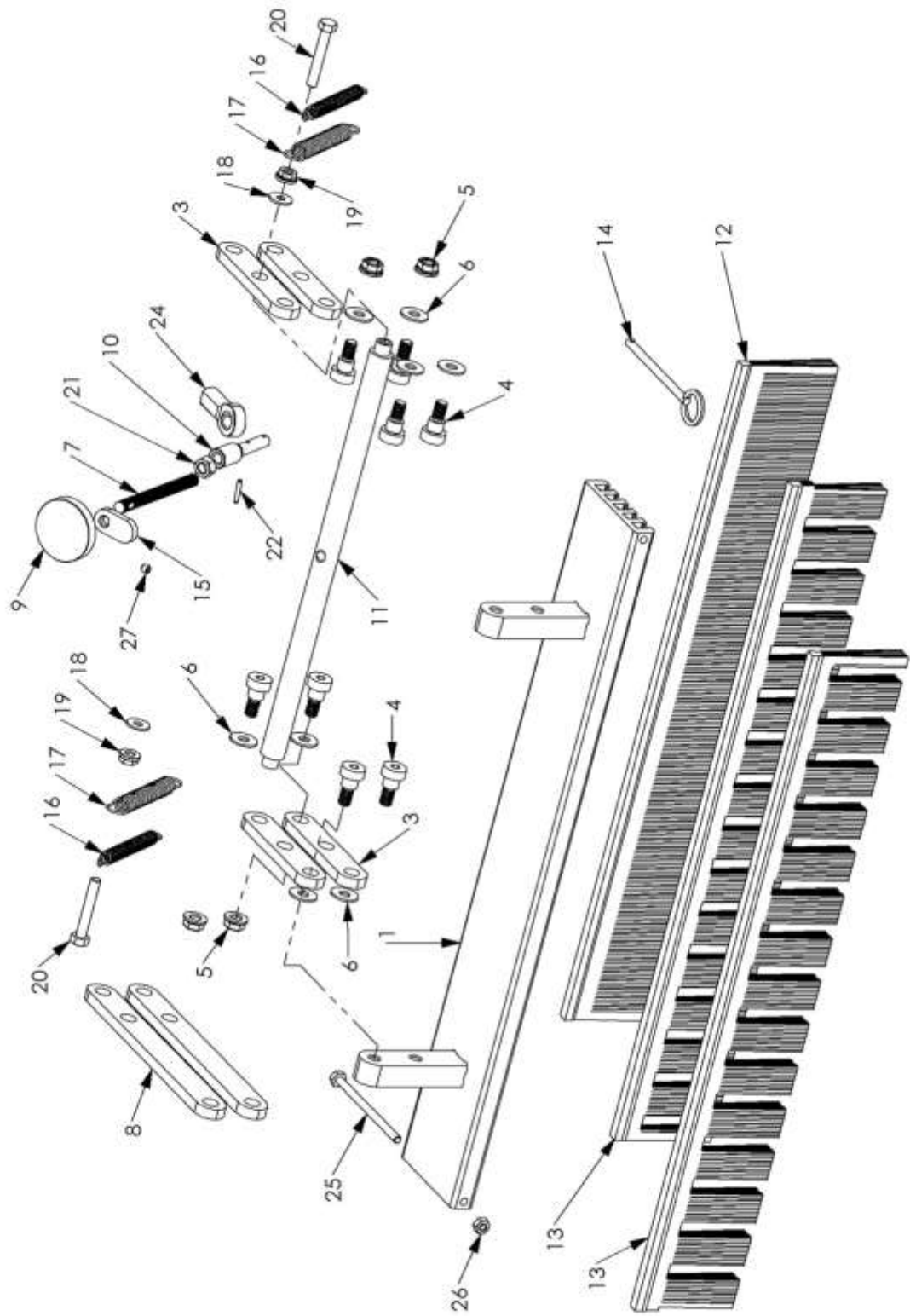
True-Surface[®] Flex Brush

Parts Breakdown to fit the Toro GM3 – 3150

Refer to page 3

Item #	Part #	Description	Quantity
1	N/A	Standard Brush Head	1
2	BR-145	Attachment Frame	2
3	BR-147	Attachment Frame Pivot Bushing	2
4	H-3585	1/2" ID x 0.062 Shim	4
5	H-6106	3/8" Internal Tooth Lock Washer	2
6	BR-072	1/2 - 3/8 x 3/8 - 16 Shoulder Bolt	4
7	H-032	3/8 - 16 x 1-1/2" Grade 8 Hex Bolt	2
8	BR-078	5/16 - 18 Tube connecting Nut	4
9	H-1019	5/16 USS Flat Washer	4
10	H-1013	5/16 Split Lock Washer	4
11	H-2503	5/16 - 18 x 2" Grade 5 Hex Bolt	4
12	GCC-233	Hood Lock Plunger with Nut	4
13	BR-146W-L	Brush Mount Pocket - Left	2
14	BR-146W-R	Brush Mount Pocket - Right	2
15	N/A	Toro Basket Frame with Roller	2
16	N/A	Toro Roller Mount Stud & Washer	4
17	BR-152	Pocket Attachment Bar Kit (Includes Items A-D)	2
A	BR-077	5/16 - 18 All Thread (28.25" Long)	1
B	BR-153	Centering Bushing	2
C	H-3147	5/16 - 18 Serrated Flange Nut	2
D	H-3179	5/16 - 18 Nylong Lock Nut	2

True-Surface® Flex Brush Single Brush Head Assembly



True-Surface® Flex Brush

Toro GM3 - 3150 Assembly View

