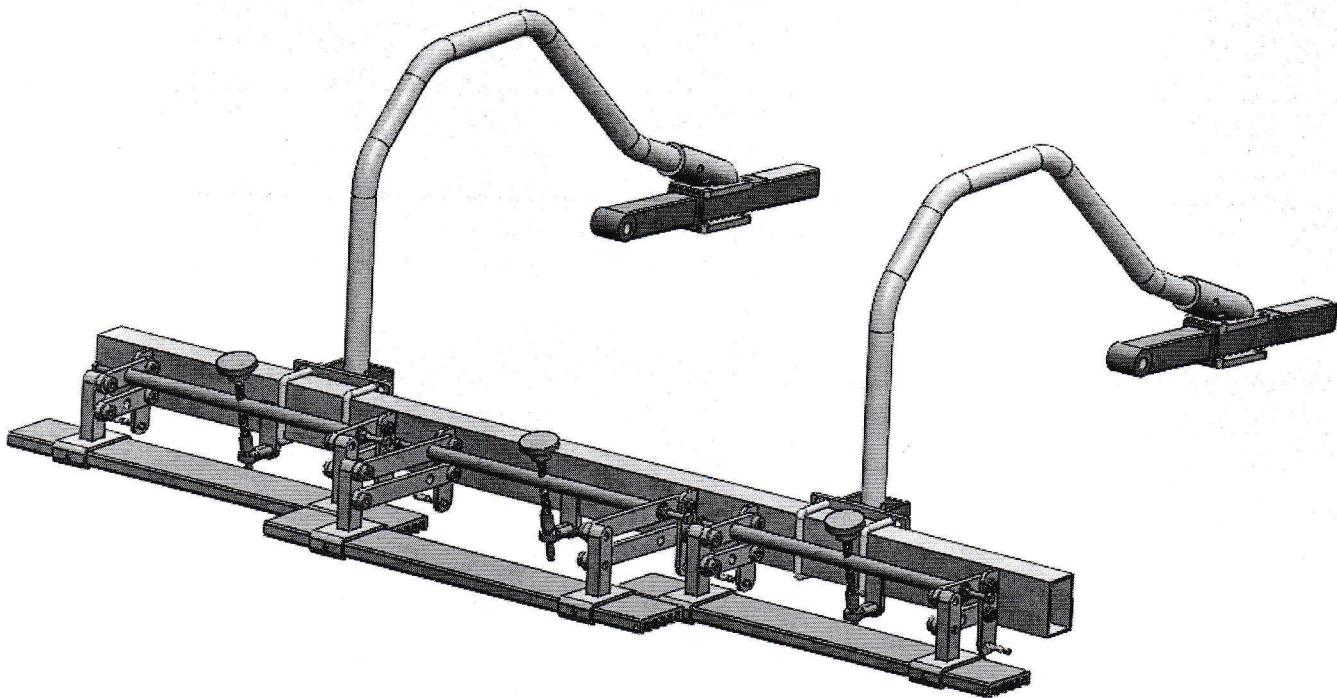


TRUE-SURFACE
FLEX BRUSH
FOR TORO 3250



FLEX BRUSH SPECIFICATIONS AND SETTINGS

- EFFECTIVE WIDTH :** 60 Inches (3 Heads 23 Inches Each)
- WEIGHT :** 55 Pounds
- CONSTRUCTION :** 6061 T6 Aluminum and 303 Stainless Steel
- INDEPENDENT HEADS :** 23 Inch Heads, Twin Arm Mounted (For best Parallel Following of Contours)
Mounts for One, up to Five Brush Strips in Any Combination of the Following.
- BRUSHES :** BLACK - Firm, 0.032" dia. crimped Polypropylene material 3/8" wide x 3" Long.
BLUE - Soft, 0.020" dia. crimped Polypropylene material 3/8" wide x 3" Long.
Both Available in Solid or Notched Strips.
- USES :** Pre-Mowing / Topdressing / Aerification Fill / Debris Removal

There are several ways to achieve the desired down pressure for you situation. The concept is to limit down travel of the brushes while allowing them to float up when necessary.

Downward force can range from: Minimal auxiliary help, up to being locked in a solid position. At the bottom of the adjuster shaft base there is a small hole that a cotter pin may be installed in that would lock the brushes so they could not float, should that be necessary.

The amount of debris or material to be moved, moisture content, grass type and height of cut will all determine what amount of downward force you will require.

The least amount of downward force is with the auxiliary springs disconnected on the end units, and one each light/soft spring on the center unit. The springs are permanently mounted, and can swing free when not in use. To fix the heads, install cotter pin in adjuster shaft just below spherical rod end to "LOCK" head and stop them from floating.

Following the attached chart will allow you to estimate the amount of downward force that each setting will achieve. Due to the leverage and length of the arms on the center unit, spring type and amount connected varies from the end units to achieve equal down pressure on all three units.

Brush strips can be moved around, removed, and even more added to achieve nearly any result you require.

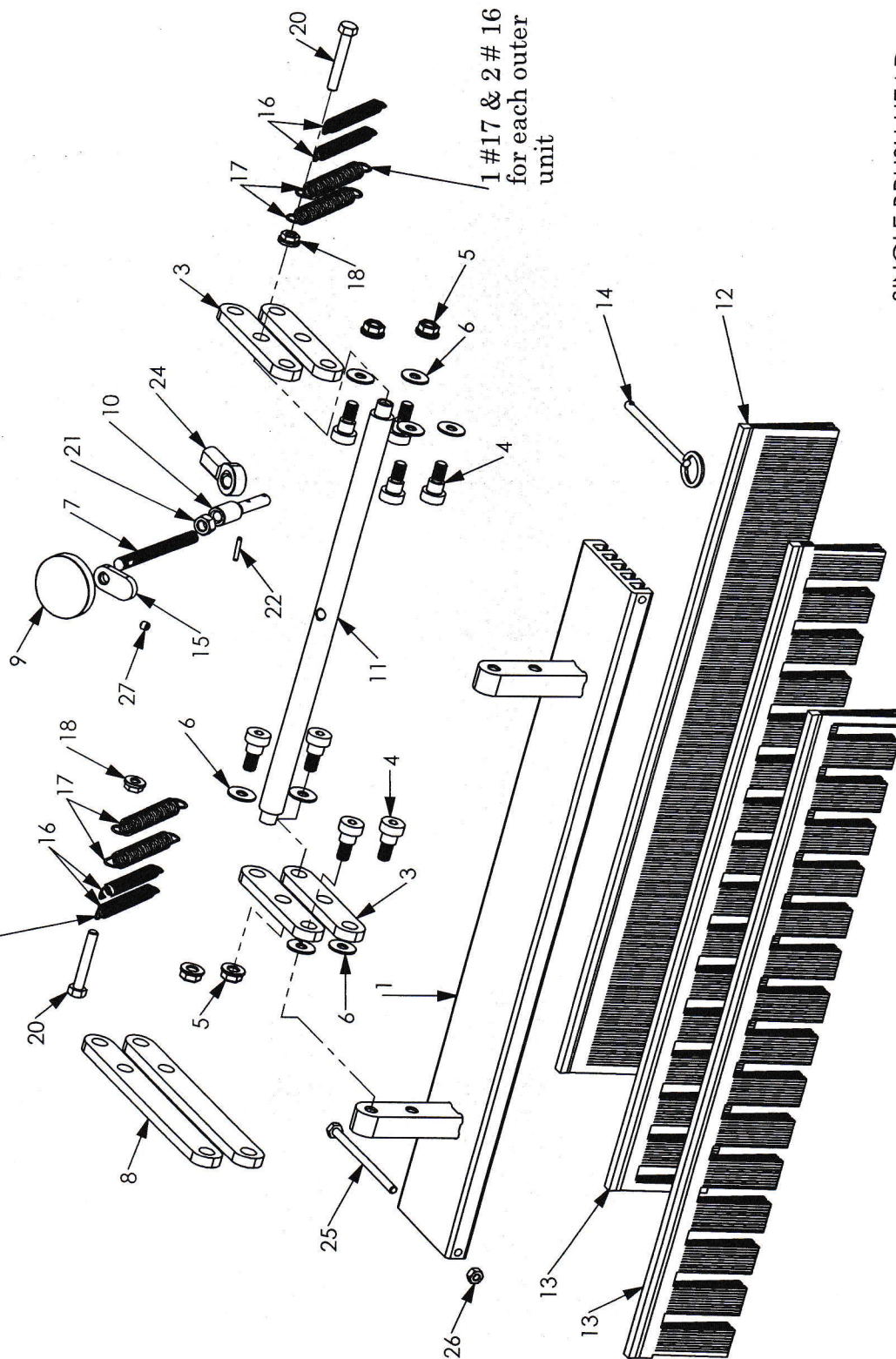
Pressures	Center Brush	End Brushes
Fixed	Fixed	Fixed
10 lbs.	1 Soft Spring	No Springs
15 lbs.	1 Firm Spring	1 Soft Spring
18 lbs.	1 Soft & 1 Firm	2 Soft Springs
25 lbs.	2 Firm Springs	1 Firm Spring

FLEX BRUSH INSTRUCTION FOR ATTACHMENT TO TORO 3250

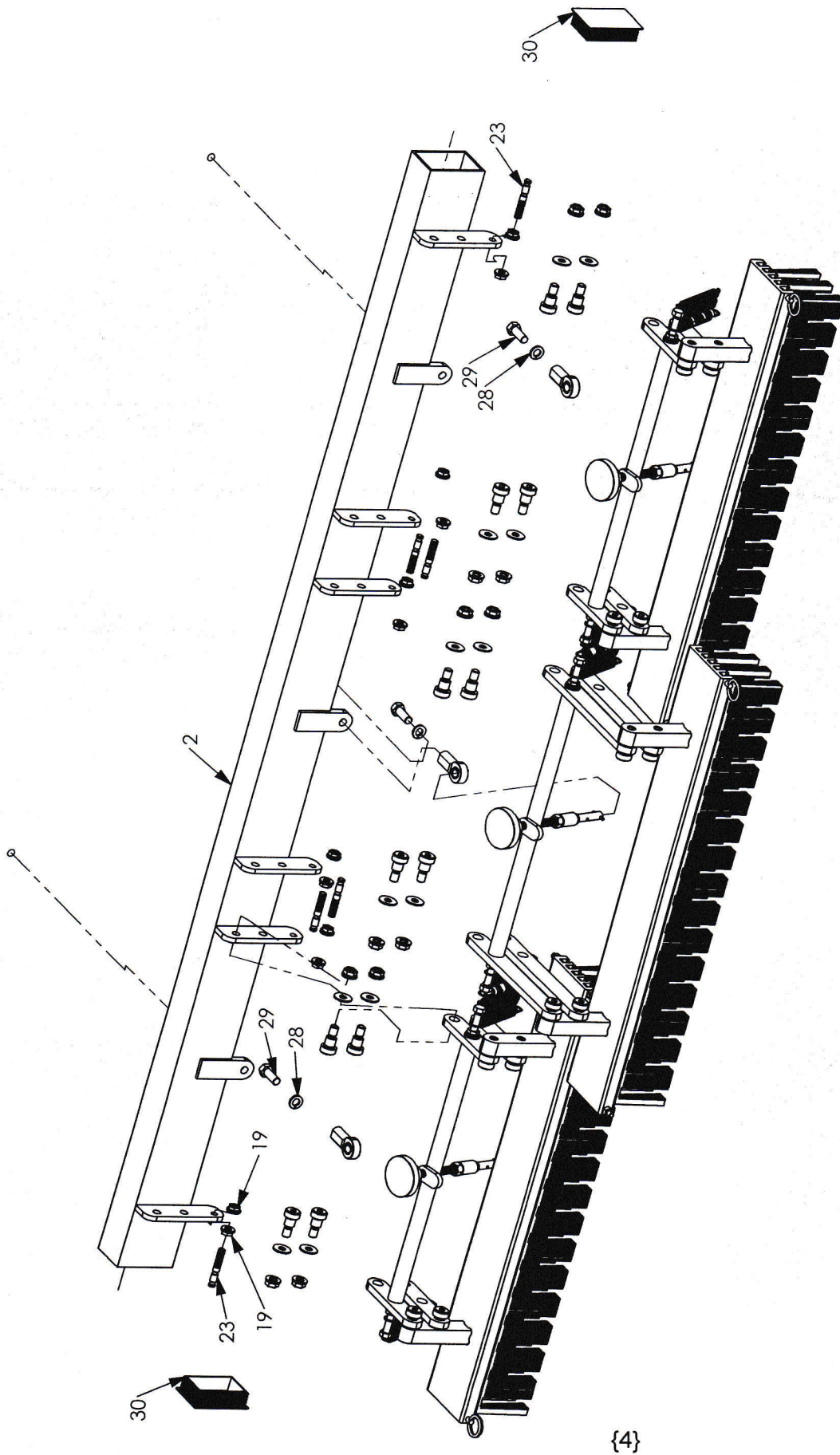
1. Locate page # 6, which is the exploded view of the mounting hardware. The reference numbers on this sketch will be used for set-up instructions.
2. Starting with the mower, setting on a solid flat surface. Find item #1 which is the square arm that lifts and pushes the cutting reels and clipping baskets etc.
3. Check the center height of the $\frac{1}{2}$ " diameter horizontal bolt at the end of this arm. Per TORO set-up, the anti-scalp rollers should be approximately $\frac{1}{2}$ " off the ground. This translates that the position described should be approximately 10-3/8" to the center of the bolt. This position has a set screw/bolt at the hinge point of the arm which can be adjusted to alter this height. Plus or minus 1/8" is OK.
4. Take LIFT ARM POCKET # 4 and CLAMP PLATE # 5 and rest the pocket on top of the lift arm open end facing forward as shown. Using bolts # 10, install CLAMP PLATE to the bottom of arm. Bolts will thread into LIFT ARM POCKET, but as soon as they start to emerge on the top, install LOCKNUT # 11 to each one.
5. Leave POCKET loose enough to slide on arm. Slide forward as far as possible, and the slide back $\frac{1}{4}$ " and tighten BOLTS first, then secure with LOCK NUTS.
6. Do the same to the second arm, and then double check that they are parallel to each other, or the same distance from a given point of the mower such as the bolt used to set the height in step # 3.
7. Attach BRUSH POCKET # 6 to the back of main BRUSH FRAME using U-BOLTS #8. These will pass through the set of holes closest to the pocket box. Measure from the end of the BRUSH FRAME to the first edge of the BRUSH POCKET plate and set at 10-3/4". Each end will be the same. This will set the pocket centers at 32-1/2". This could be altered slightly if needed to better fit the mower.
8. Insert ARM #3 into BRUSH POCKET, and secure with SHOULDER BOLT # 7 as shown. Design is intended for use in the center of the three holes available, but if necessary the other positions may be more desirable as long as the same position is used at either end.
9. Step between ARMS and lift and align them into LIFT ARM POCKETS # 4 till they slide in completely. Then install WIRE LOOP PINS # 9.
10. Raise brush heads about 4 inches from the floor by rotating the adjuster knobs clockwise.
11. Remove the brush strip retainer pins. # 14, Page 3.
12. There are 2, firm notched brush strips, and 1 soft full strip per head supplied. We have found in our testing that the installation to be described has worked quite well in a multitude of conditions.
13. Visualizing the direction of travel, one firm notched strip is installed into the first and third (middle) position of each brush head and the soft is installed in the fifth, (last) position. The notched strips should be installed end for end with each other when on the same head so that the notches DO NOT align from the first brush strip to the second.
14. Brush strip retaining pin # H-BR-072 is then installed at the end of the brush head to lock the strips into place. On the center unit, stop the end of the pin flush to the back edge of the brush head to avoid interference with the adjacent brush.
15. Set the height of the brushes: A good place to start is on a flat solid floor, have the units in the lowered position, and then adjust till they just do touch the floor, and rotate the locking tab into position to secure the adjuster shaft.
16. Refer to Page# 1 for further instructions on BRUSH usage and settings.

1 #16 & 2 #17
FOR CENTER
UNIT

1 #17 & 2 #16
for each outer
unit



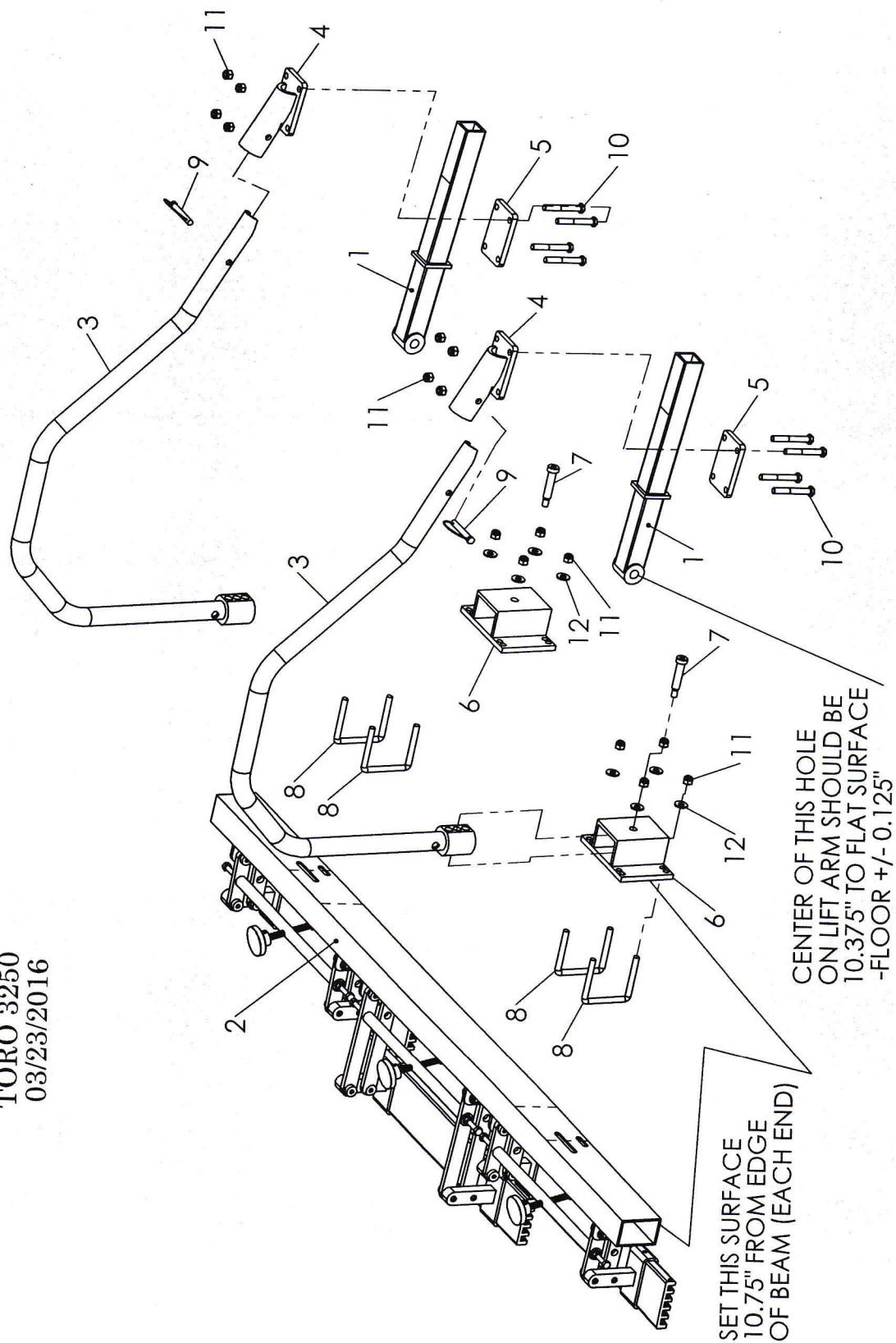
SINGLE BRUSH HEAD
FOR 3-WAY TOOL BAR
END UNIT SHOW
02/28/14 :: 03/09/16
05/20/16



STANDARD BRUSH HEAD
FOR OPTIONAL MOUNTING
STYLES
03/23/16

BRUSH HEAD PARTS LIST (OPTIONAL MOUNT) 03/23/16 - 06/23/17				
ITEM #	DEPT#	PART #	DESCRIPTION	QTY. FOR FULL HEAD
1	61P	BR-105-1	BRUSH STRIP HEAD (REV "A")	3
2	61P	BR-133-3	MAIN TOOL BAR	1
3	61P	BR-104	HORIZONTAL ARM (SHORT) FOR END UNITS	8
4	H	BR-072	.5" x .375" x 3/8-16 SHOULDER BOLT	24
5	H	1016	3/8-16 SERRATED FLANGE NUT	12
6	H	5013	3/8" MIL SPEC. # MS15795-814 FLAT WASHER	24
7	61P	BR-111	ADJUSTMENT SHAFT	3
8	61P	BR-102	HORIZONTAL ARM (LONG) CENTER UNIT	4
9	61P	BR-112	ADJUSTMENT KNOB	3
10	61P	BR-121	ADJUSTMENT SHAFT MOUNT BASE	3
11	61P	BR-119	ADJUSTMENT CROSS BAR	3
12	61P	BR-114S	BRUSH STRIP (SOFT)	3
13	61P	BR-114FS	BRUSH STRIP (FIRM - SLOTTED)	6
14	H	BR-071	BRUSH STRIP RETAINING PIN	3
15	61P	BR-123	ADJUSTMENT SHAFT LOCK TAB	3
16	61P	BR-124	LOAD SPRING (LIGHT) 2 PER SIDE ON EACH END UNIT. 1 PER SIDE FOR CENTER UNIT	10
17	61P	BR-125	LOAD SPRING (HEAVY) 2 PER EACH SIDE ON CENTER UNIT. 1 PER EACH SIDE ON END UNITS	8
18	H	3147	5/16-18 SMOOTH FLANGE NUT	6
19	H	1147	5/16-16 SERRATED FLANGE NUT	12
20	H	2503	5/16-18 x 2" GR. 5 HEX BOLT	6
21	H	1015	3/8-16 JAM NUT	3
22	H	BR-073	1/8" x 3/4" SPLIT SPRING PIN	3
23	61P	BR-151	SPRING ATTACHMENT STUD	6
24	61P	BR-7127	3/8" FEMALE ROD END	3
25	H	BR-076	1/-20 x 4" GR. 5 HEX BOLT	3
26	H	1153	1/4-20 NYLON LOCKNUT	3
27	H	6013	1/4-20 x 1/4" SET SCREW	3
28	H	1010	3/8" SPLIT LOCKWASHER	3
29	H	2502	3/8-24 x 1-3/4" GR. 5 HEX BOLT	3
30	H	BR-079	TUBE PLUG	2

FLEX BRUSH
MOUNTING HARDWARE
TORO 3250
03/23/2016



TORO 3250 FLEX BRUSH ATTACHMENT 03/23/2016				
ITEM#	DEPT#	PART#	DESCRIPTION	QTY.
1	N/A	N/A	TORO 3250 LIFT/PUSH ARMS	N/A
2	N/A	N/A	ASSEMBLED FLEX BRUSH	1
3	61P	BR-197B	Attachment Arm For 3250	2
4	61P	BR-200	Attachment Arm Pocket For 3250	2
5	61P	BR-195	Pocket Clamp Plate	2
6	61P	BR-226	Brush Mounting Pocket	2
7	H	BR-080	1/2" x 2" x 3/8-16 Shoulder Bolt	2
8	H	BR-221	U-Bolt 3/8-16 x 3"ID x 4" long	4
9	H	BR-081	3/8" x 2" Wire Loop Pin	2
10	H	286	3/8-16 x 2-3/4" Gr. 5 Hex Bolt	8
11	H	1180	3/8-16 Nylon Insert Lock Nut	16
12	H	1019	5/16" USS Flat Washer	8